

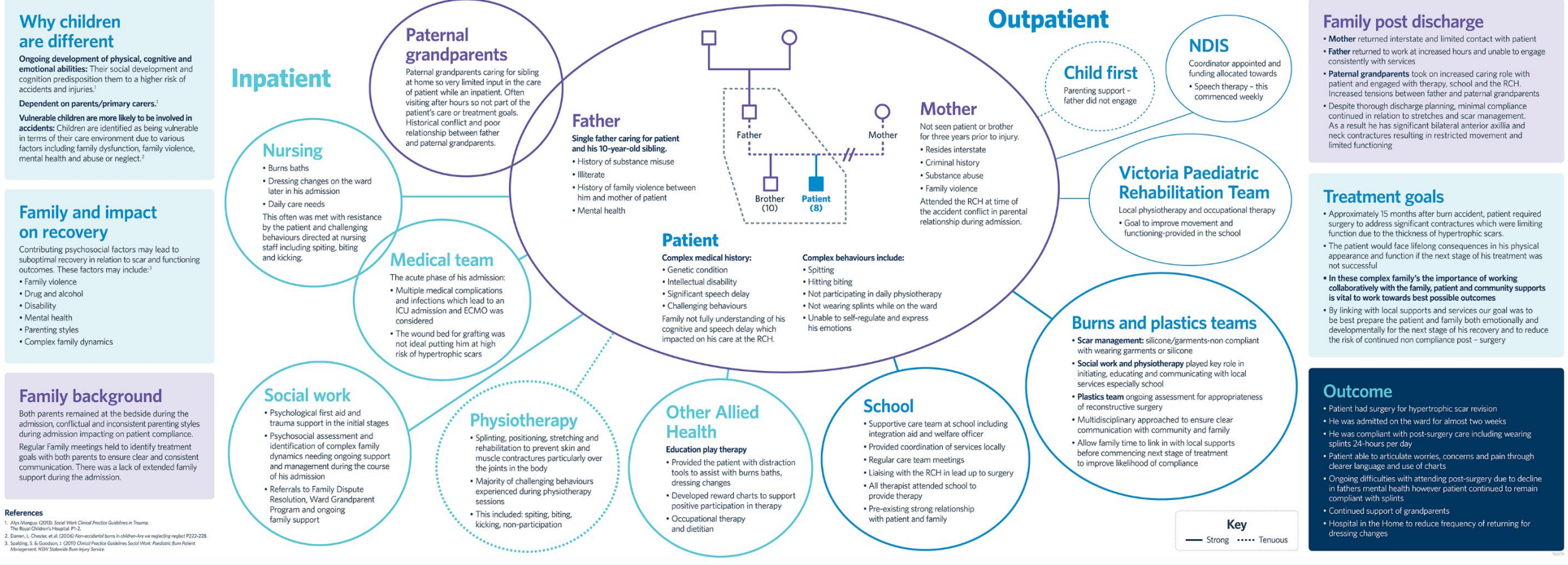
'It's all very complex'

A systemic view of vulnerable children who experience burn injuries

Anna Lucia BSW Senior Social worker; **Alison Baillie** BSW, MSW Senior Social Worker; **Nicole Alexander** BSC PHYSIO Senior Physiotherapist
The Royal Children's Hospital, Melbourne, Victoria, Australia



This visual map highlights the complexity surrounding this 6-year-old psychosocially vulnerable boy who experienced a 20% flame burn to his neck, chest and right arm and the multiple interventions and supports accessed during this admission at The Royal Children's Hospital (RCH). This map also represents the ongoing work done post discharge with the multiple service systems to reduce the risk of noncompliance to optimise his mobility and quality of life.



References

1. Allyn Mangano. (2013). Social Work Clinical Practice Guidelines in Trauma. The Royal Children's Hospital P1-2.
2. Darren, L. Cheslake, et al. (2006) Non-accidental burns in children-Are we neglecting neglect P222-228.
3. Spalding, S. & Goodson, J. (2010) Clinical Practice Guidelines Social Work: Paediatric Burn Injury Management. NSW Statewide Burn Injury Service.

