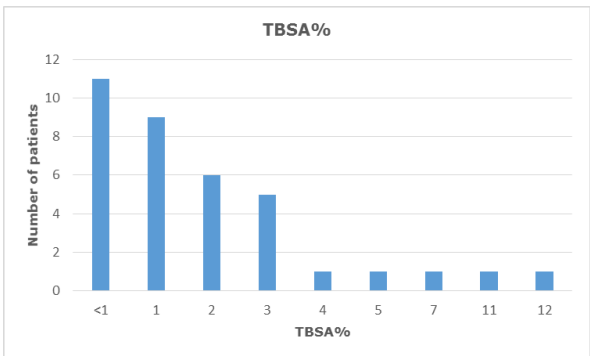
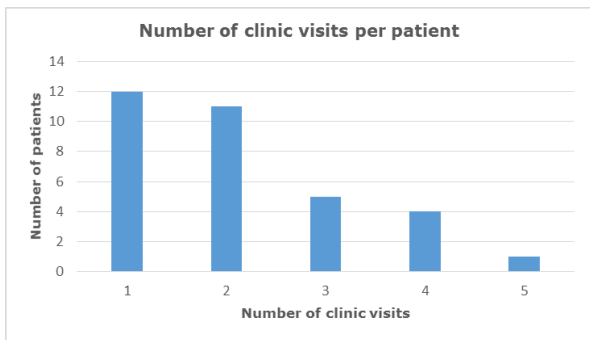
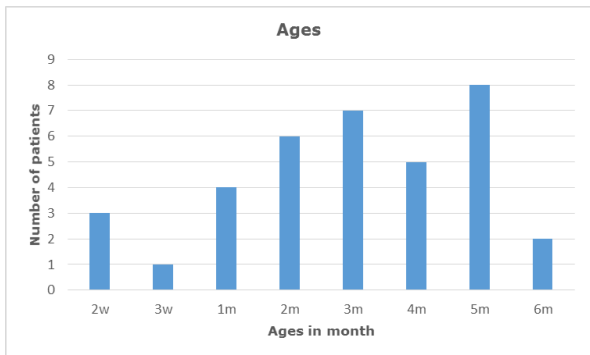




WHAT ABOUT THE BABIES? Kathy Bicknell (Burns CNC) Alison Baillie (Social Worker) Rebecca Mills (Social Worker) Royal Children’s Hospital, Melbourne



Introduction

Data obtained from the Burns Registry of Australia & NZ (BRANZ) 2016 – 2017 annual report shows that the most common age group of children admitted to hospital with a burn injury is 13 – 24 months of age. There are however a number of children under the age of one who sustain a burn injury.

Aim and Method

The aim was to review two years of both inpatient and outpatient presentations of children with a burn injury aged six months of age and younger, at The Royal Children’s Hospital, Melbourne (RCH) to determine any common causes of burn injury and if extra services or supports were required for this age group. The age of 6 months and younger was chosen as this age group are usually not yet crawling or walking. Data included in the review was age at injury, TBSA%, mechanism of injury, body part injured, number of clinic reviews and if any services and supports required.

Results

At RCH in 2016 and 2017 a total of 36 infants <6 months of age were treated with an age range of 2 weeks to 6 months. Three patients were admitted with 1 requiring surgery for a dressing change. Six patients were reviewed by a social worker and three of the six had social services involved. Only three types of mechanism (scald, contact, radiant) of injury were identified and TBSA% ranged from <1% - 12% with most injuries being superficial – mid dermal in depth. The most common body area injured was the lower limb. The majority of injuries occurred in the home. No patient required ongoing scar management.

Conclusion

Consistent with BRANZ data, scald burn in this review was the most common mechanism of injury. The majority of patients did not require extra services and most were reviewed once in burns clinic. Information gained from this data will help guide future planning of prevention and care for this age group.

References:

Burn Registry of Australia Annual report 1st July 2016- 30th June 2017

